

SHADE ELEMENTS



Omni Channel

TOOLS REQUIRED

Drill / Drill bits / Level / Fasteners / Pencil / Measuring Tape
Ladder / Allen key set / Socket or Ring spanner set / Knife

IMPORTANT NOTE:

Incorrect installation and operation can result
in injury and/or product failure.

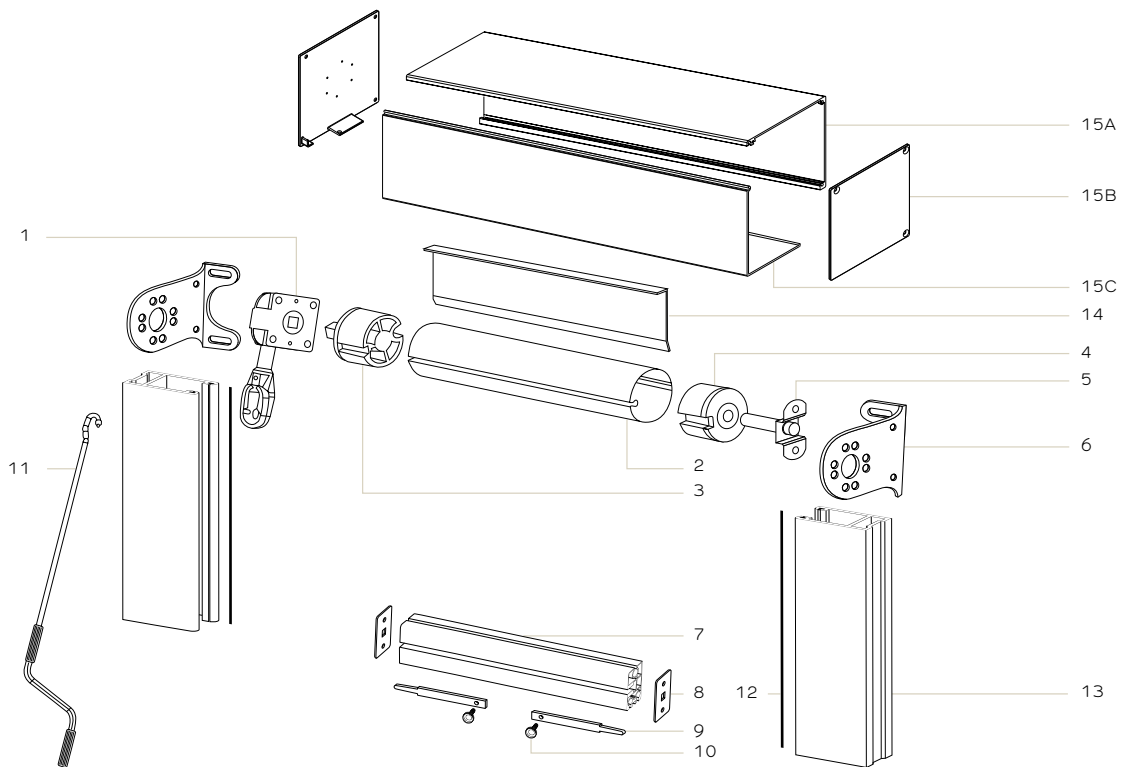
DO NOT operate screen before ALL fasteners
have been checked/tightened.

Before attending project site for installation,
make sure all parts required are included in the package.



Omni Channel

1.

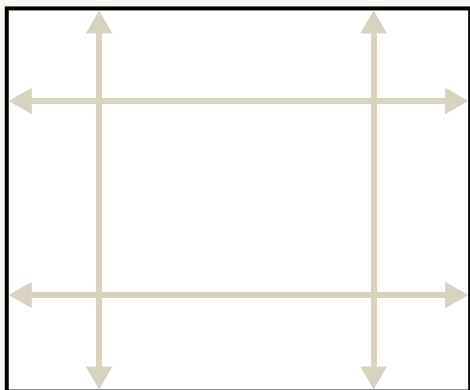


- | | | | | |
|---------------|---------------------|-----------------|------------------------|----------------------|
| 1 Gearbox | 5 Pivot Pin & Plate | 9 Slide Lock | 13 Side Channel | 15 Pelmet (optional) |
| 2 Keyway Tube | 6 Mounting Bracket | 10 Thumb Screw | 14 Flashing (optional) | 15A Pelmet Top/Back |
| 3 Drive End | 7 Bottom Rail | 11 Crank Handle | | 15B Pelmet Brackets |
| 4 Idler End | 8 End Cap | 12 Brush Insert | | 15C Pelmet Front |

SETUP

Unpack all components and check against the above exploded view.

Measure the opening to ensure width and height are the same as what was ordered.



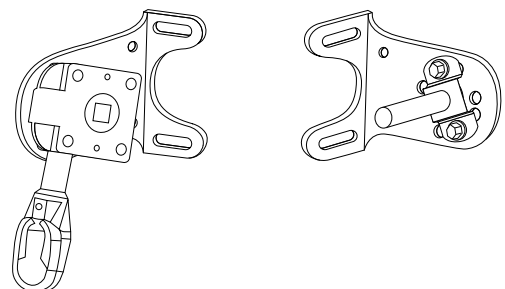
1 ASSEMBLE TOP MOUNTING BRACKET COMPONENTRY (check drive orientation is correct)

Drive end — This requires the gearbox to be mounted on the inside of the brackets with the 2x 40mm long bolts and nyloc nuts provided. Ensure the square opening is in the centre of the bracket hole and the gearbox has some angle for ease of winding. This assembly will be slightly different depending on top fix or face fix.

Idler end — This requires the S/S plate for the pivot pin & plate to be mounted on the inside of the bracket with the 2x 12mm long bolts and nyloc nuts provided, ensure these are on the correct angle for top fix or face fix. The pivot pin is then inserted loosely into the Idler end in the roller tube, the R-Clip remains left over for later use.

DRIVE END

IDLER END



ARRANGEMENT MAY DIFFER DEPENDING ON MOUNTING OPTIONS. FACEFIX / REVEAL FIX SHOWN



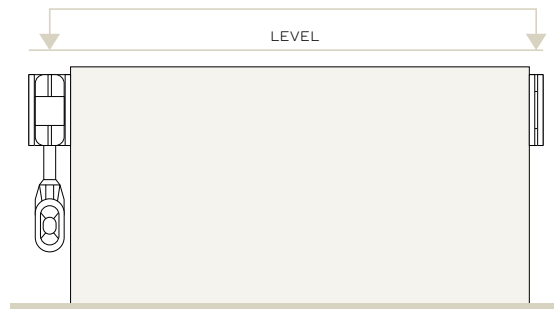
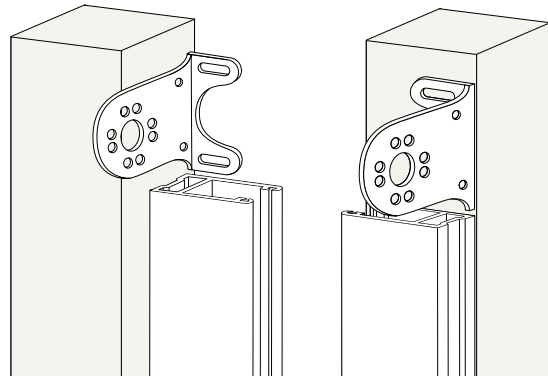
Omni Channel

2 FASTENING MOUNTING BRACKETS

There are different hole selections for bracket fastening, choose the suitable holes for the installation i.e. Slotted holes for face/top fix and side mounting holes for reveal installations. Make sure the fasteners suit the application and are strong as this connection will take the majority of the weight and wind load of the screen. Brackets must be installed level.

REVEAL FIX

FACE FIX



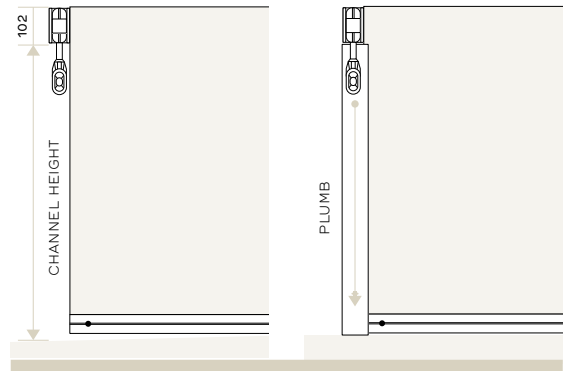
3 SIDE CHANNEL INSTALLATION

Measure the distance from the underside of the mounting bracket to the ground level — Cut side channels to this measurement. **Note:** This should be 102mm less than the overall height.

Reveal Installation - Pre-drill fixing holes in the side channel. **Note:** There is an extrusion guideline in the centre of the channel opening to assist with alignment. Fixing holes should be approximately 200mm from the top & bottom and have spacing not greater than 500mm apart. Be sure to recess the head of the fasteners through the first layer of aluminium.

Face fix Installation - Pre-drill fixing holes in the side channel. **Note:** There is an extrusion guideline on the face of the channel to assist with alignment. Fixing holes should be approximately 200mm from the top & bottom and have spacing not greater than 500mm apart. Be sure to recess the head of the fasteners through the first layer of aluminium. A plug/cap or sticker will be required to cover the holes made in the channel

Ensure Side channels are installed plumb/level.



4 ROLLER TUBE ASSEMBLY INSTALLATION

Check S/S pin in located inside the Idler end.

Lift roll into position, square Drive end first into gearbox/motor bracket, then slot Idler End Pin into the S/S plate and install R-Clip.

Once the roller tube assembly is secure in the bracket, lower the screen downward about halfway, do not worry if the bottom rail and fabric is not inside the Side Channels.

Lift one side of the bottom rail and insert into Side Channel along with the fabric all the way up to the roller tube — Do this for both sides. The screen will now be operable inside the Side Channels

5 SLIDE LOCKS

Lower screen all the way to the bottom stop, be mindful of the ground not being level and stop at the highest point of both sides, this is where the Slide Lock locking holes need to be drilled (approx. 30mm up from the underside of bottom rail). Drill a 10mm hole and test the operation of the Slide lock. **Note:** It's important the Slide Locks are positioned level to provide even tension to the screen – failure to do this may result in a loose screen on one side and potential damage.

6 MOTORISED OPERATION (Refer to motor programming instructions included)

Once motor is connected, pair the remote to the motor on the correct channel.

Always set a top limit, usually where the bottom rail sits under the roller.

The bottom limit is to be set low enough so the user can attach the S/S snap shackle to the ground anchors. Once the screen is anchored press the “up” button to tension the screen, the motor will torque sense and shut off when the fabric is tight.

7 FINISHING

Ensure the screen operates well and is taught when anchored. Check all fasteners are tight and suited to the application.



SHADEELEMENTS.CO.NZ

